

TM 11 - 6125 - 253 - 24 P

**TECHNICAL MANUAL**

**ORGANIZATIONAL, DIRECT SUPPORT, AND GENERAL**

**SUPPORT MAINTENANCE**

**REPAIR PARTS AND SPECIAL TOOLS LISTS**

**FOR**

**MOTOR GENERATOR PU-733/A**

**(NSN 6125-00-724-3580)**

---

**HEADQUARTERS, DEPARTMENT OF THE ARMY**

**July 1978**

TECHNICAL MANUAL }  
No 11-6125-253-24P }

HEADQUARTERS  
DEPARTMENT OF THE ARMY  
WASHINGTON, DC 19 Jul 1978

ORGANIZATIONAL, DIRECT SUPPORT, AND GENERAL SUPPORT MAINTENANCE  
REPAIR PARTS AND SPECIAL TOOLS LISTS  
FOR  
**MOTOR GENERATOR PU-733/A**  
**(NSN 6125-00-724-3580)**

*Current as of 10 February 1978*

**REPORTING OF ERRORS**

You can improve this manual by recommending improvements using DA Form 2028-2 located in the back of the manual. Simply tear out the self addressed form, fill it out as shown on the sample, fold it where shown, and drop it in the mail.

If there are no blank DA Form 2028-2 in the back of your manual, use the standard DA Form 2028 (Recommended Changes to Publications and Blank Forms) and forward to the Commander, US Army Communications and Electronics Materiel Readiness Command, ATTN: DRSEL-MA-Q, Fort Monmouth, New Jersey 07703

In either case a reply will be furnished direct to you.

\*This manual supersedes TM 11 6125 253 24P, 9 June 1972

Table of Contents

		Page	Illus Figure
SECTION	I. <b>Introduction</b> .....	1	1
	II. <b>Repair parts list</b> .....	5	
GROUP	00 <b>Motor Generator PU-733/A</b> .....	5	1,2
	01 <b>Regulator, voltage and frequency</b> .. .	13	3-5
SECTION	III. <b>Special tools list (Not applicable)</b>		
	IV. <b>National stock number and part number index</b> .....	20	

SECTION I  
INTRODUCTION

1. Scope

This manual lists spares and repair parts, special tools, special test, measurement, and diagnostic equipment (TMDE), and other special support equipment required for performance of organizational, direct support, and general support maintenance of the PU-733/A. It authorizes the requisitioning and issue of spares and repair parts as indicated by the source and maintenance codes.

2. General

This Repair Parts and Special Tools List is divided into the following sections:

*a. Section II. Repair Parts List.* A list of spares and repair parts authorized for use in the performance of maintenance. The list also includes parts which must be removed for replacement of the authorized parts. Parts lists are composed of functional groups in numeric sequence, with the parts in each group listed in figure and item number sequence.

*b. Section III. Special Tools List.* Not applicable.

*c. Section IV. National Stock Number and Part Number Index.* A list, in National item identification number (NIIN) sequence, of all National stock numbers (NSN) appearing in the listings, followed by a list, in alphabetic sequence, of all part numbers appearing in the listings. National stock numbers and part numbers are cross-referenced to each illustration figure and item number appearance.

3. Explanation of Columns

*a. Illustration.* This column is divided as follows:

(1) *Figure number.* Indicates the figure number of the illustration on which the item is shown.

(2) *Item number.* The number used to identify item called out in the illustration.

*b. Source, Maintenance, and Recoverability (SMR) Codes.*

(1) *Source code.* Source codes indicate the manner of acquiring support items for maintenance, repair, or overhaul of end items. Source codes are entered in the first and second positions of the Uniform SMR Code format as follows:

<i>Code</i>	<i>Definition</i>
<b>PA</b>	<b>Item procured and stocked for anticipated or known usage</b>
<b>XD</b>	<b>A support item that is not stocked. When required, item will be procured through normal supply channels</b>

**NOTE**

Cannibalization or salvage may be used as a source of supply for any items source coded above except those coded XA and aircraft support items as restricted by AR 700-42.

(2) *Maintenance code.* Maintenance codes are assigned to indicate the levels of maintenance authorized to USF and REPAIR support items. The maintenance codes are entered in the third and fourth positions of the Uniform SMR Code format as follows:

(a) The maintenance code entered in the third position will indicate the lowest maintenance level authorized to remove, replace, and use the support item. The maintenance code entered in the fourth position will indicate one of the following levels of maintenance:

<i>Code</i>	<i>Application/Explanation</i>
<b>O</b>	Support item is removed, replaced, used at the organizational level.
<b>H</b>	Support item is removed, replaced, used at the general support level.

(b) The maintenance code entered in the fourth position indicates whether the item is to be repaired and identifies the lowest maintenance level with the capability to perform complete repair (i.e., all authorized maintenance functions). This position will contain one of the following maintenance codes.

<i>Code</i>	<i>Application/Explanation</i>
H -	The lowest maintenance level capable of complete repair of the support item is the general support level.
Z -	Nonreparable No repair is authorized.

(3) **Recoverability code.** Recoverability codes are assigned to support items to indicate the disposition action on unserviceable items. The recoverability code is entered in the fifth position of the Uniform SMR Code format as follows

<i>Recoverability Codes</i>	<i>Definition</i>
Z -	Nonreparable item When unserviceable, condemn and dispose at the level indicated in position 3
H -	Reparable Item When uneconomically repairable, condemn and dispose at the general support level

**c National Stock Number** Indicates the National stock number assigned to the item and will be used for requisitioning purposes

**d Part Number** Indicates the primary number used by the manufacturer (individual, company, firm, corporation, or Government activity), which controls the design and characteristics of the item by means of its engineering drawings, specifications, standards, and inspection requirements to identify any item or range of items

**NOTE**

When a stock numbered item is requisitioned, the repair part received may have a different part number than the part being replaced

**e. Federal Supply Code for Manufacturer (FSCM).** The FSCM is a 5-digit numeric code listed in SB 708-42 which is used to identify the manufacturer, distributor, or Government agency, etc.

**f. Description.** Indicates the Federal item name and, if required, a minimum description to identify the item.

**g. Unit of Measure (U/M).** Indicates the standard of the basic quantity of the listed item as used in performing the actual maintenance function. This measure is expressed by a two-character alphabetical abbreviation (eg, ea, in, pr, etc) When the unit of measure differs from the unit of issue, the lowest unit of issue that will satisfy the required units of measure will be requisitioned

**h Quantity Incorporated in Unit.** Indicates the quantity of the item used in the breakout shown on the illustration figure, which is prepared for a functional group, subfunctional group, or an assembly.

4. Special Information

The following publications pertain to the PU 733/A and its components

- TM11-6125-253-20, Motor Generator PU-733/A
- TM11-6125-253 35, Motor Generator PU-733/A

5. How to Locate Repair Parts

**a** When National stock number or part number is unknown

(1) **First** Using the table of contents, determine the functional group within which the item belongs. This is necessary since illustrations are prepared for functional groups and listings are divided into the same groups.

(2) **Second** Find the illustration covering the functional group to which the item belongs

(3) **Third** Identify the item on the illustration and note the illustration figure and item number of the item.

(4) **Fourth** Using the Repair Parts Listing, find the figure and item number noted on the illustration

**b** When National stock number or part number is known

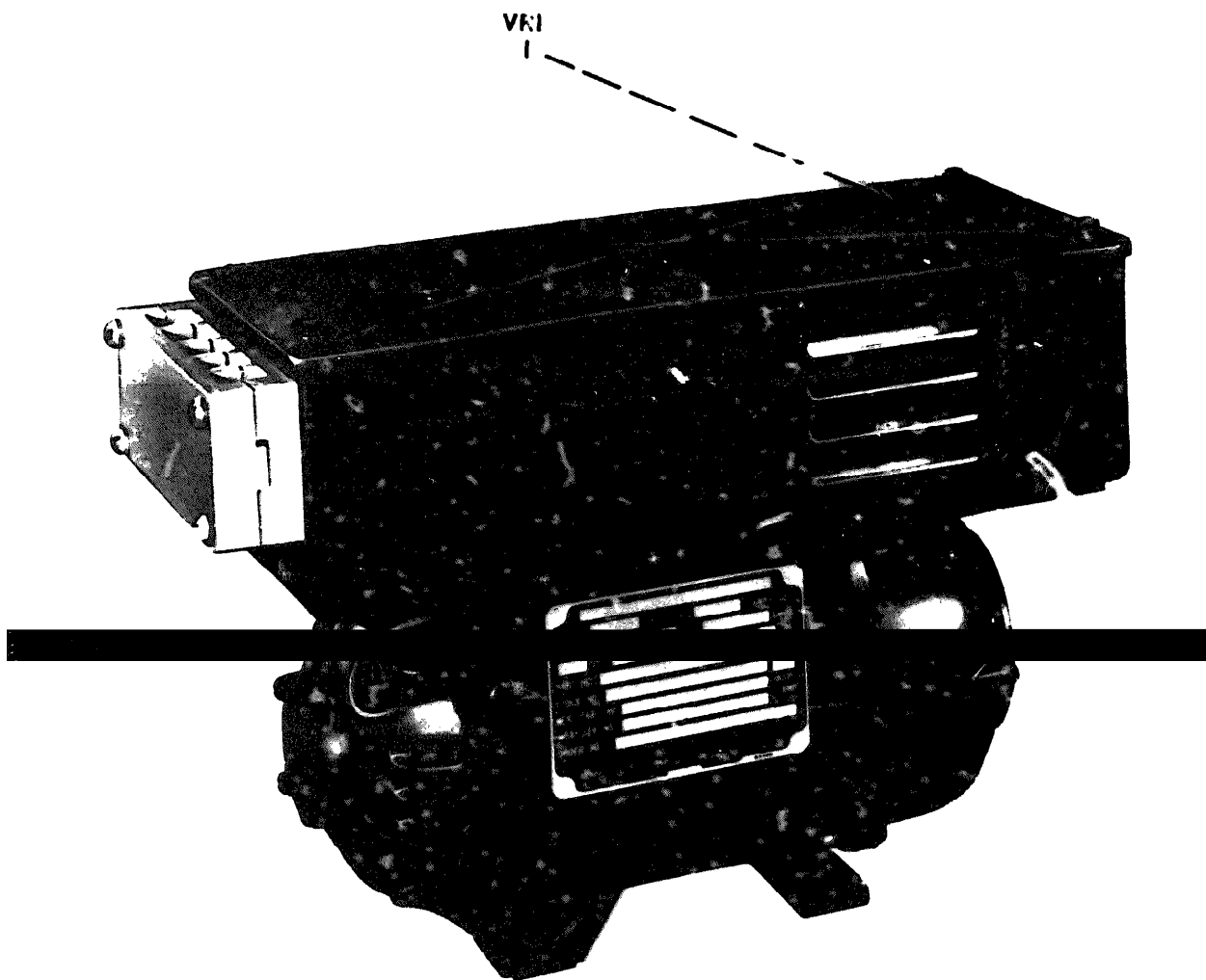
(1) **First.** Using the Index of National Stock Numbers and Part Numbers, find the pertinent National stock number or part number. This index is in NIIN sequence followed by a list of part numbers in alphameric sequence, cross-referenced to the illustration figure number and item number.

(2) **Second.** After finding the figure and item number, locate the figure and item number in the repair parts list.

6. Abbreviations

Not applicable.

(Next printed page is 4)



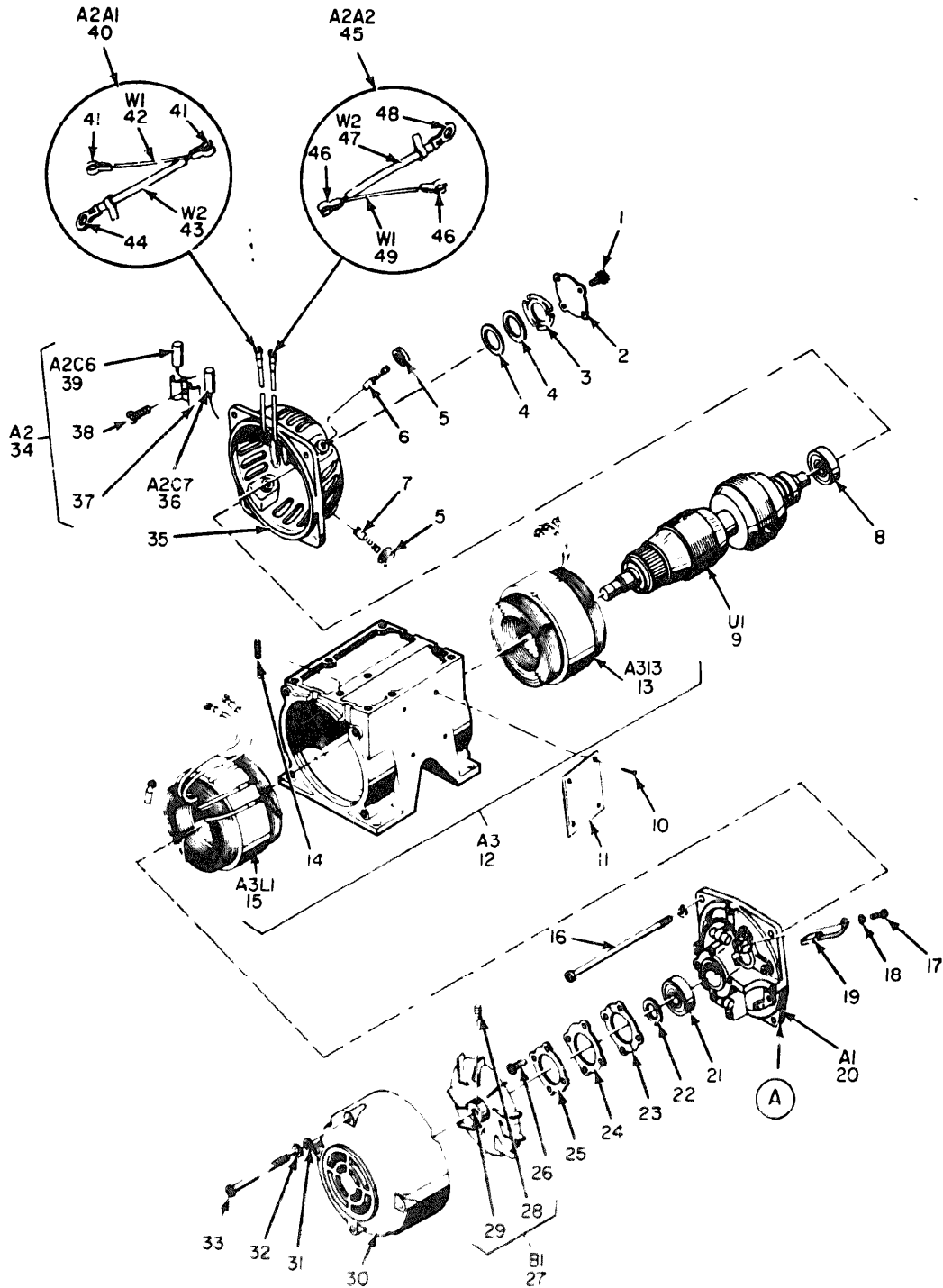
E\_4PI001

Figure 1. Motor Generator PU-733/A.

SECTION II

(1) ILLUSTRATION (2) FIG NO	(3) (4) ITEM NO	(5) SMR CODE	(6) NAT NA ST ALK NUMBER	(7) PART NUMBER	(8) FSCM	(9) DESCRIPTION	(10) GROUPING CODE	(11) U M	(12) UNIT	(13) QTY NC IN
1	1	PAHHH	6110-00-165-1541	CSV1185-5	7 29	REGULATOR, VOLTAGE & FREQ			EA	1





NOTE  
 FOR COMPLETE REFERENCE DESIGNATION  
 PREFIX WITH MGIA3

ROTATING SECTION

EL4PI002

Figure 2. Motor Generator PU-733/A, Generator Section (Sheet 1 of 2).

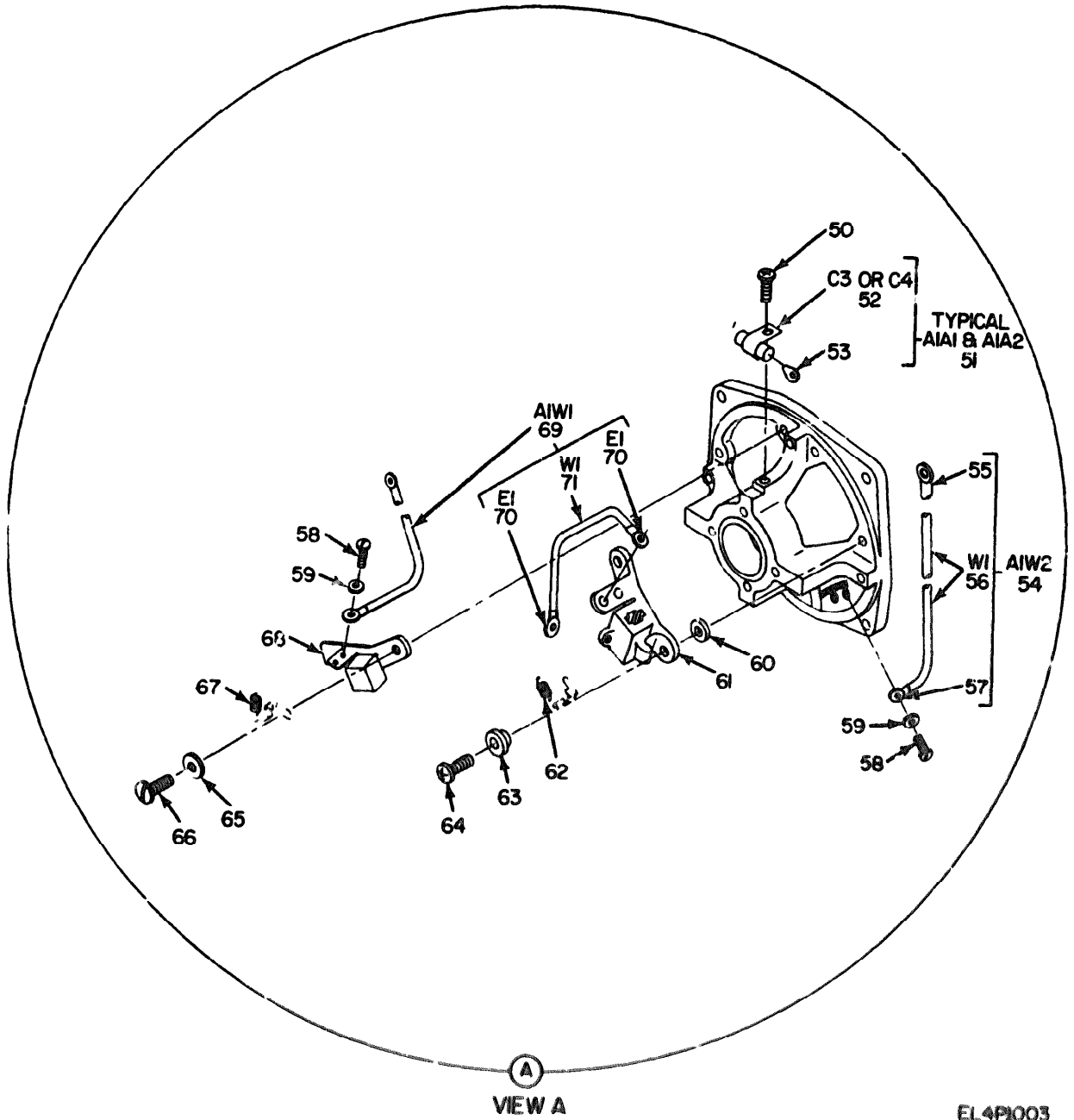


Figure 2. Motor Generator PU-733/A, Generator Section (Sheet 2 of 2).

SECTION II

(1) ILLUSTRATION		(2)	(3)	(4)	(5)	(6) DESCRIPTION	(7)	(8)
(A) FIG NO	(B) ITEM NO	SMR CODE	NATIONAL STOCK NUMBER	PART NUMBER	FSCM		U.M.	QTY INC IN UNIT
2	1	PAHZZ	5305-00-022-8292	5R327-1	29092	SCREW, ASSEMBLED WASHER	EA	4
2	2	PAHZZ	3110-00-061-7300	A10003	07639	PLATE, BEARING	EA	1
2	3	PAHZZ	6125-00-310-3502	8009	43334	SPRING, LOADING	EA	1
2	4	PAHZZ	5365-00-527-8177	1562-26	07639	WASHER, SHIM	EA	2
2	5	PAHZZ	5999-00-061-8168	A10211	07639	CAP, ELECTRICAL	EA	4
2	6	PAHZZ	5977-00-895-3513	SA10214	07639	BRUSH, ELECTRICAL, CONTACT	EA	2
2	7	PAHZZ	5977-00-895-3514	SA10215	07639	BRUSH, ELECTRICAL, CONTACT	EA	2
2	8	PAHZZ		A10006	07639	BEARING, BALL, ANNULAR	EA	1
2	9	PAHZZ	6125-00-061-6652	586501	07639	ARMATURE, MOTOR-GENERATOR	EA	1
2	10	PAHZZ	5305-00-175-3230	4521318-14	96906	SCREW, URIVE	EA	4
2	11	PAHZZ	9905-00-061-7284	MS26515-1	96906	PLATE, DESIGNATION-USAGE DATA	EA	1
2	12	PAHZZ	6125-00-421-0316	SC4286	07639	STATOR, MOTOR-GENERATOR	EA	1
2	13	PAHZZ	6125-00-484-8739	0720	07639	STATOR, AC	EA	1
2	14	PAHZZ	5305-00-887-6075	1522-7	07639	SETScrew	EA	8
2	15	PAHZZ	6105-00-764-8872	0719	07639	STATOR, DC	EA	1
2	16	PAHZZ	5305-00-530-9225	A10090-1	1562	SCREW, MACHINE	EA	4
2	17	PAHZZ	5305-00-022-8292	5R327-1	29092	SCREW, ASSEMBLED WASHER	EA	4
2	18	PAHZZ	5305-00-422-7138	A2052	72121	WASHER, FLAT	EA	4
2	19	PAHZZ	5977-00-628-5322	A10007	07639	BRUSH, ELECTRICAL, CONTACT	EA	4
2	20	PAHZZ	6125-00-083-5893	SC4163	07639	ENDBELL, ELEC. ROTATING EQPT	EA	1
2	21	PAHZZ	3110-00-516-5318	A10765	07639	BEARING, BALL, ANNULAR	EA	1
2	22	PAHZZ	5365-00-282-1379	5101-3740	79136	RING, RETAINING	EA	1
2	23	PAHZZ	6125-00-083-8321	A10260	07639	CLAMP, HIM CLENCHING	EA	1
2	24	PAHZZ	3110-00-346-2371	A10254	07639	SPACER, PLATE	EA	1
2	25	PAHZZ	3110-00-346-2370	A10253	07639	PLATE, BEARING	EA	1
2	26	PAHZZ	5305-00-958-5453	MS35120-236	96906	SCREW, MACHINE	EA	4
2	27	PAHZZ	4140-00-061-3116	SA10128	07639	FAN, ELECTRICAL ROTATING EQPT	EA	1
2	28	PAHZZ		470F	14938	SETScrew	EA	1
2	29	PAHZZ	4140-00-659-9864	46034	07639	FAN, ELECTRICAL ROTATING EQPT	EA	1
2	30	PAHZZ	6125-00-061-9896	49575	07639	COVER, FAN	EA	1
2	31	PAHZZ	5310-00-167-0816	2N960-6	89044	WASHER, FLAT	EA	4
2	32	PAHZZ	5310-00-645-4007	453338-41	96906	WASHER, LOCK	EA	4
2	33	PAHZZ	5305-00-984-6224	MS35206-277	96906	SCREW, MACHINE	EA	4
2	34	PAHZZ		PI2946	07639	ENDBELL, ELEC. ROTATING EQPT	EA	1
2	35	PAHZZ	6125-00-418-9707	586675	07639	ENDBELL, ELEC. ROTATING EQPT	EA	1
2	36	PAHZZ	5905-00-683-7251	MS35206-277	0174	CAPACITOR, FIXED, PAPER DIEL	EA	1
2	37	PAHZZ		8378	07639	CLAMP, RETAINING	EA	1
2	38	PAHZZ	5305-00-889-2099	453338-41	96906	SCREW, MACHINE	EA	1
2	39	PAHZZ		5848	0174	CAPACITOR, FIXED, PAPER DIEL	EA	1
2	40	PAHZZ		42954-1	07639	PLATE, CONTACT	EA	1

SECTION II

(1) ILLUSTRATION		(2)	(3)	(4)	(5)	(6)	(7)	(8)
(a) FIG NO	(b) ITEM NO	SMR CODE	NATIONAL STOCK NUMBER	PART NUMBER	FSCM	DESCRIPTION	UNASSEMBLED CODE	QTY INC IN UNIT
2	41	XJHZZ		M655C2T	75560	TERMINAL, BRUSHHOLDER	EA	2
2	42	XDHZZ		P10352P053E20AWG BLK	81349	WIRE,ELECTRICAL	EA	1
2	43	XDHZZ		P10352P053E20AWG BLK	81349	WIRE,ELECTRICAL	EA	1
2	44	PAHZZ	5940-00-577-3807	YAE22G13	09922	TERMINAL, LUG	EA	1
2	45	XDHZZ		K29594-2	07639	LEAD UNIT, ELECTRICAL	EA	1
2	46	XDHZZ		M655C2T	75560	TERMINAL, BRUSHHOLDER	EA	2
2	47	XDHZZ		P10352P053	07639	LEAD,ELECTRICAL	EA	1
2	48	PAHZZ	5940-00-577-3807	YAE22G13	09922	TERMINAL, LUG	EA	1
2	49	XDHZZ		P10352S034	07639	LEAD,ELECTRICAL	EA	1
2	50	PAHZZ	5305-00-022-8212	Q10033	96152	SCREW, ASSEMBLED WASHER	EA	2
2	51	XDHZZ	5910-01-011-1132	SA10164	07639	CAPACITOR UNIT	EA	2
2	52	PAHZZ	5910-00-807-5566	CP10A3KB104K3	81349	CAPACITOR, FIXED, PAPER DIELECTRIC	EA	1
2	53	PAHZZ	5940-00-050-2308	IS354-3	06906	TERMINAL, LUG	EA	1
2	54	XDHZZ		K20678	07639	LEAD UNIT, ELECTRICAL	EA	1
2	55	PAHZZ	5940-00-926-9741	YAE18N	09922	TERMINAL, LUG	EA	1
2	56	XDHZZ		F10402G071EAWG22 HORANGE	81349	LEAD,ELECTRICAL	EA	1
2	57	PAHZZ	5940-00-813-0698	YAE518N1	09922	TERMINAL, LUG	EA	1
2	58	PAHZZ	5305-00-022-8292	SR327-1	29092	SCREW, ASSEMBLED WASHER	EA	2
2	59	PAHZZ	5310-00-422-7138	A2052	72121	WASHER, FLAT	EA	2
2	60	PAHZZ	5310-00-636-1865	A10316	07639	WASHER, NONMETALLIC	EA	4
2	61	PAHZZ	5977-00-937-9507	SA10323	07639	HOLDER, ELECTRICAL CONTACT BRUSH	EA	2
2	62	PAHZZ	5360-00-753-0841	A10065	07639	SPRING, HELICAL EXTENSION	EA	1
2	63	PAHZZ	5970-00-634-2027	A10315	07639	INSULATOR, BUSHING	EA	4
2	64	PAHZZ	5305-00-984-4989	JN515-6-7	88044	SCREW, MACHINE	EA	4
2	65	PAHZZ	5310-00-167-0816	AN960-6	88044	WASHER, FLAT	EA	4
2	66	PAHZZ	5305-00-558-8735	Z28293	00000	SCREW, ASSEMBLED WASHER	EA	4
2	67	PAHZZ	5360-00-763-0841	A10065	07639	SPRING, HELICAL EXTENSION	EA	1
2	68	XDHZZ		SA10347	07639	HOLDER, ELECTRICAL	EA	2
2	69	XDHZZ		K20677	07639	LEAD UNIT, ELECTRICAL	EA	2
2	70	PAHZZ	5940-00-813-0698	YAE518N1	09922	TERMINAL, LUG	EA	2
2	71	XDHZZ		MILW16878TYPEF20 AWGRED	07639	LEAD,ELECTRICAL	EA	1

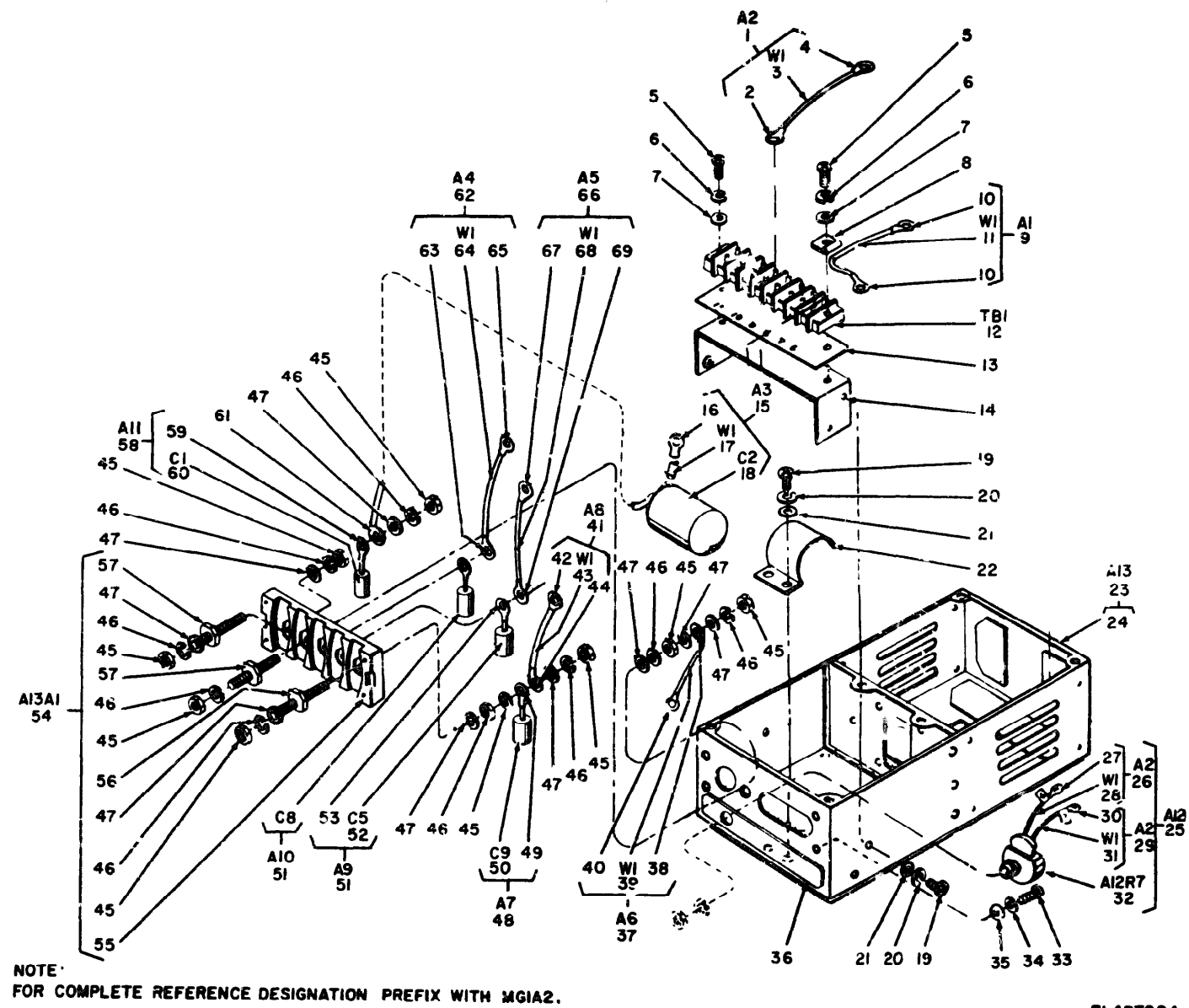


Figure 3. Regulator Voltage and Frequency, Control Housing.

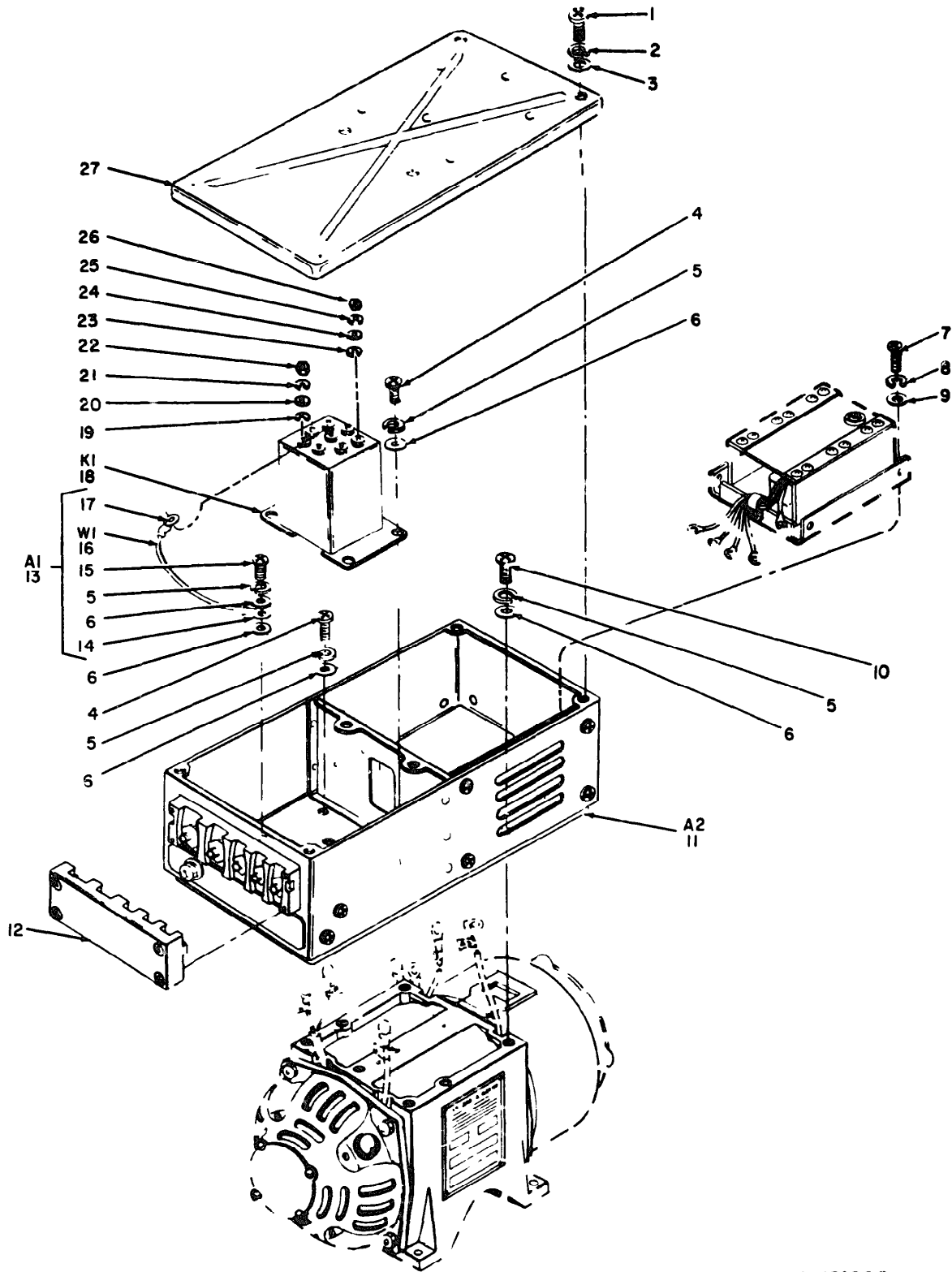
## SECTION II

TM 11-6125-253-24P

ILLUSTRATION		NATIONAL STOCK NUMBER	PART NUMBER	FSCM	DESCRIPTION	U/M	QTY INC IN UNIT
(1) FIG NO.	(2) ITEM NO. SMR CODE						
GROUP 01 REGULATOR, VOLTAGE AND FREQUENCY							
3	1 XDHXX		K29606	07639	LEAD UNIT, ELECTRICAL	EA	1
3	2 PAHZZ	5940-00-577-3807	YAE22G13	09922	TERMINAL LUG	EA	1
3	3 XDHZZ		P10327G017	81349	WIRE, ELECTRICAL	EA	1
3	4 PAHZZ	5940-00-926-9741	YAE18N	09922	TERMINAL LUG	EA	1
3	5 PAHZZ	5305-00-984-4992	MS35206-232	96906	SCREW, MACHINE	EA	2
3	6 PAHZZ	5310-00-045-4007	MS35338-41	96906	WASHER, LOCK	EA	1
3	7 PAHZZ	5310-00-167-0816	AN960-4	88044	WASHER, FLAT	EA	2
3	8 PAHZZ	5340-00-985-6633	NPC2	81074	CLAMP, LOOP	EA	1
3	9 XDHXX		K29607	07639	LEAD UNIT, ELECTRICAL	EA	1
3	10 PAHZZ	5940-00-577-3807	YAE22G13	09922	TERMINAL LUG	EA	2
3	11 XDHZZ		P10327G049	81349	WIRE, ELECTRICAL	EA	1
3	12 PAHZZ	5940-00-502-4522	ST88	73382	TERMINAL BOARD	EA	1
3	13 XDHZZ		A15598	07639	PLATE, DESIGNATION	EA	1
3	14 XDHZZ		A15600	07639	BRACKET UNIT	EA	1
3	15 XDHXX		SA10926	07639	CAPACITOR UNIT	EA	1
3	16 XDHZZ		33457	00779	TERMINAL, LUG	EA	1
3	17 XDHZZ		QQM343TYPERBCLM1 2AMG	81349	WIRE, ELECTRICAL	EA	1
3	18 PAHZZ	5910-00-933-0493	C45316	96733	CAPACITOR, FIXED, PAPER DIELEC	EA	1
3	19 PAHZZ	5305-00-984-4984	MS35206-227	96906	SCREW, MACHINE	EA	6
3	20 PAHZZ	5310-00-045-4007	MS35338-41	96906	WASHER, LOCK	EA	6
3	21 PAHZZ	5310-00-167-0816	AN960-6	88044	WASHER, FLAT	EA	6
3	22 XDHZZ		A15821	07639	CLAMP, CAPACITOR	EA	1
3	23 XDHXX		G7132	07639	HOUSING ASSY, CONTROL	EA	1
3	24 XDHZZ		G7137	07639	HOUSING ASSEMBLY	EA	1
3	25 XDHXX		SA10928-2	07639	RESISTOR UNIT VARIABLE WW	EA	1
3	26 XDHXX		A19788	07639	LEAD UNIT, ELECTRICAL	EA	1
3	27 PAHZZ	5940-00-577-3807	YAE22G13	09922	TERMINAL LUG	EA	1
3	28 XDHZZ		P103270023	81349	WIRE, ELECTRICAL	EA	1
3	29 XDHXX		A19789	07639	LEAD UNIT, ELECTRICAL	EA	1
3	30 PAHZZ	5940-00-577-3807	YAE22G13	09922	TERMINAL LUG	EA	2
3	31 XDHZZ		P10327M018	81349	WIRE, ELECTRICAL	EA	1
3	32 PAHZZ	5905-00-052-6832	B5622-7	07639	RESISTOR, VARIABLE, WW	EA	1
3	33 PAHZZ	5305-00-990-6444	MS35207-261	96906	SCREW, MACHINE	EA	4
3	34 PAHZZ	5310-00-045-3296	MS35338-43	96906	WASHER, LOCK	EA	4
3	35 PAHZZ	5310-00-167-0818	AN960-10	88044	WASHER, FLAT	EA	4
3	36 XDHZZ		A10934	07639	PLATE, INSTRUCTION	EA	1
3	37 XDHXX		A15610	07639	LEAD UNIT, ELECTRICAL	EA	1
3	38 XDHZZ		36272	00779	TERMINAL, LUG	EA	1

SECTION II

(1) ILLUSTRATION		(2)	(3)	(4)	(5)	(6) DESCRIPTION	(7) QUANTITY	(8) UNIT
(a) FIG NO	(b) ITEM NO	SMR CODE	NATIONAL STOCK NUMBER	PART NUMBER	FSCM			QTY INC IN UNIT
3	39	XDHZZ		P10452R031E12AWG BLACK	81349	WIRE, ELECTRICAL	EA	1
3	40	PAHZZ	5940-00-501-7669	MS20659-5	96906	TERMINAL, LUG	EA	1
3	41	XDHHH		SA10972	07639	LEAD UNIT, ELECTRICAL	EA	1
3	42	PAHZZ	5940-00-926-9741	YAE18N	09922	TERMINAL LUG	EA	1
3	43	XDHZZ		P10327GJ39	81349	WIRE, ELECTRICAL	EA	1
3	44	PAHZZ	5940-00-577-3807	YAE22G13	09922	TERMINAL LUG	EA	1
3	45	XDZZZ		MS20341-10A	96906	NUT, PLAIN, HEXAGON	EA	15
3	46	PAHZZ	5310-00-261-8278	MS35338-100	96906	WASHER, LOCK	EA	15
3	47	PAHZZ	5310-00-264-1390	AN961-10	88044	WASHER, FLAT	EA	15
3	48	XDHHH		A15607-3	07639	CAPACITOR UNIT	EA	1
3	49	PAHZZ	5940-00-477-8362	A7663-2	07639	TERMINAL LUG	EA	1
3	50	PAHZZ	5910-00-062-0018	CP09A3KB104K3	81349	CAPACITOR, FIXED, PAPER DIELEC	EA	1
3	51	XDHHH		A15607-1	07639	CAPACITOR UNIT	EA	2
3	52	PAHZZ	5910-00-984-8900	CP09A3KE333K3	81349	CAPACITOR, FIXED, PAPER DIELEC	EA	1
3	53	PAHZZ	5940-00-477-8362	A7663-2	07639	TERMINAL, LU	EA	1
3	54	XDHHH		SB6497	07639	TERMINAL BOARD	EA	1
3	55	PAHZZ	5940-00-583-8908	MS25131-1	15972	TERMINAL BOARD	EA	1
3	56	PAHZZ	5940-00-926-0016	MS25080-3	96906	TERMINAL STD	EA	3
3	57	PAHZZ	5940-00-725-0765	MS25080-4	96906	TERMINAL, STUD	EA	2
3	58	XDHHH		A15607-2	07639	CAPACITOR UNIT	EA	1
3	59	PAHZZ	5940-00-665-5592	4012	77147	TERMINAL, LUG	EA	1
3	60	PAZZZ	5910-00-062-0018	CP09A3KB104K3	81349	CAPACITOR, FIXED	EA	1
3	61	XDHZZ		J6272	00779	TERMINAL, LUG	EA	1
3	62	XDHHH		K29605	07639	LEAD UNIT, ELECTRICAL	EA	1
3	63	PAHZZ	5940-00-577-3807	YAE22G13	09922	TERMINAL, LUG	EA	1
3	64	XDHZZ		P10327GJ47E22AWG BLACK	81349	WIRE, ELECTRICAL	EA	1
3	65	PAHZZ	5940-00-926-9741	YAE18N	09922	TERMINAL, LUG	EA	1
3	66	XDHHH		SA10973	07639	LEAD UNIT, ELECTRICAL	EA	1
3	67	PAHZZ	5940-00-926-9741	YAE18N	09922	TERMINAL LUG	EA	1
3	68	XDHZZ		P10327GJ37E22AWG BLACK	81349	LEAD, ELECTRICAL	EA	1
3	69	PAHZZ	5940-00-577-3807	YAE22G13	09922	TERMINAL, LUG	EA	1



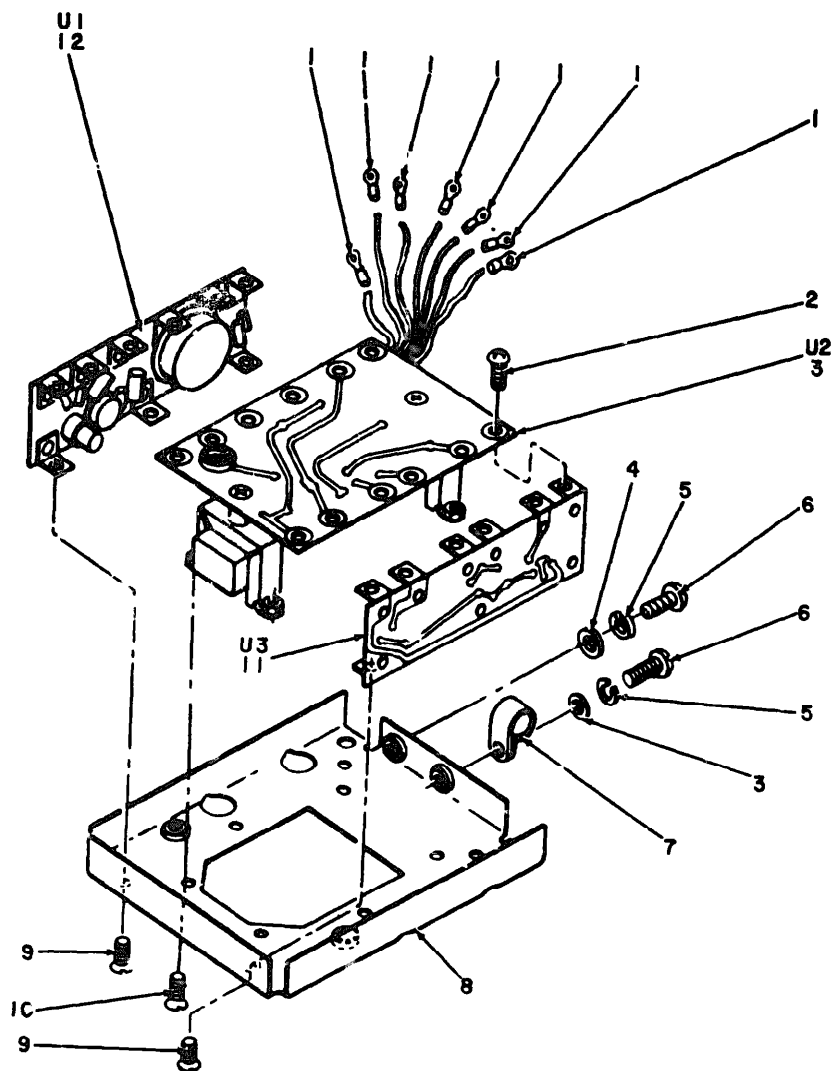
EL4PI005

Figure 4. Regulator Voltage and Frequency, Disassembly.



SECTION II

(1) ILLUSTRATION		(2)	(3)	(4)	(5)	(6)	(7)	(8)
(a) FIG NO	(b) ITEM NO	SMR CODE	NATIONAL STOCK NUMBER	PART NUMBER	FSCM	DESCRIPTION	QTY INC IN UNIT	
4	1	PAHZZ	5305-00-984-6191	MS35206-243	96906	SCREW, MACHINE	EA	6
4	2	XDZZ		MS25338-42	96906	WASHER, LOCK	EA	6
4	3	PAHZZ	5310-00-515-8058	AN960-8	88044	WASHER, FLAT	EA	6
4	4	PAHZZ	5305-00-989-7434	MS35207-263	96906	SCREW, MACHINE	EA	5
4	5	PAHZZ	5310-00-045-3296	MS35338-43	96906	WASHER, LOCK	EA	8
4	6	PAHZZ	5310-00-167-0818	AN960-10	88044	WASHER, FLAT	EA	9
4	7	PAHZZ	5305-00-889-3000	MS35206-230	96906	SCREW, MACHINE	EA	4
4	8	PAHZZ	5310-00-045-4007	MS35338-41	96906	WASHER, LOCK	EA	4
4	9	PAHZZ	5310-00-167-0816	AN960-6	88044	WASHER, FLAT	EA	4
4	10	PAHZZ	5305-00-990-6444	MS35207-261	96906	SCREW, MACHINE	EA	2
4	11	XDHHH		J2201	07639	HOUSING ASSY,REGULATOR	EA	1
4	12	PAOZZ	5940-00-954-1628	SA15119	07639	COVER, TERMINAL BOARD	EA	1
4	13	XDHHH		K29608	07639	LEAD UNIT, ELECTRICAL	EA	1
4	14	PAHZZ	5940-00-926-9741	YAE18N	09922	TERMINAL,LUG	EA	1
4	15	PAHZZ	5305-00-989-7435	MS35207-264	96906	SCREW, MACHINE	EA	1
4	16	XPZZ		P10327J033	81349	WIRE,ELECTRICAL	EA	1
4	17	PAHZZ	5940-00-577-3807	YAE22G13	09922	TERMINAL,LUG	EA	1
4	18	XDZZ		5797-7705	82415	RELAY, ARMATURE	EA	1
4	19	PAHZZ	5310-00-274-8702	MS35338-60	96906	WASHER, LOCK	EA	6
4	20	PAHZZ	5310-00-194-0634	AN961-6	88044	WASHER, FLAT	EA	12
4	21	PAHZZ	5310-00-184-8977	MS35338-98	96906	WASHER, LOCK	EA	6
4	22	PAHZZ	5310-00-934-9763	MS35649-265	96906	NUT, HEX	EA	12
4	23	PAHZZ	5310-00-274-8707	MS35338-61	96906	WASHER, LOCK	EA	2
4	24	XDZZ		AN961-8	88044	WASHER, FLAT	EA	4
4	25	PAHZZ	5310-00-576-0546	MS35338-99	96906	WASHER, LOCK	EA	2
4	26	PAHZZ	5310-00-410-3015	MS35649-286T	96906	NUT, HEX	EA	4
4	27	XDZZ		P12845	07639	COVER, REGULATOR, ACCESS	EA	1



EL4PI006

Figure 5. Regulator Voltage and Frequency, Regulator Assembly.

SECTION II

(1) ILLUSTRATION		(2)	(3)	(4)	(5)	(6)	(7)	(8)
(a) FIG NO	(b) ITEM NO	SMR CODE	NATIONAL STOCK NUMBER	PART NUMBER	FSCM	DESCRIPTION	UNIT	QTY INC IN UNIT
5	1	PAHZZ	5940-00-577-3807	YAE22G13	09 22	TERMINAL, LUG	EA	7
5	2	PAHZZ	5305-00-470-8352	K24873-3	07639	SCREW, ASSEMBLED WASHER	EA	12
5	3	PAHZZ	6125-00-444-1071	G5877-5	07639	CIRCUIT CARD ASSEMBLY	EA	1
5	4	PAHZZ	5310-00-167-0831	AN960-4L	88044	WASHER, FLAT	EA	2
5	5	PAHZZ	5310-00-543-2410	MS35338-4J	96906	WASHER, LOCK	EA	2
5	6	PAHZZ	5305-00-993-0190	MS35206-214	96906	SCREW, MACHINE	EA	2
5	7	XDHZZ		NPC3	81074	CLAMP, LOOP	EA	1
5	8	XDHZZ		PL1273-2	07639	BASE ASSY, REGULATOR	EA	1
5	9	PAHZZ	5305-00-088-9150	MS24693S1	96906	SCREW, MACHINE	EA	6
5	10	XDHZZ		AN507-632R4	88044	SCREW, MACHINE	EA	4
5	11	PAHZZ	6110-00-757-7037	G5878	07639	CIRCUIT CARD ASSY, VOLTAGE	EA	1
5	12	PAHZZ	6110-00-757-7038	G5876	07639	CIRCUIT CARD ASSY, FREQUENCY	EA	1

NATIONAL STOCK NUMBER AND PART NUMBER INDEX  
 NOTE: LATEST NATIONAL STOCK NUMBER AND PART NUMBER ASSIGNMENTS ARE INCLUDED AT END OF INDEX

STOCK NUMBER	FIGURE NO.	ITEM NO.	STOCK NUMBER	FIGURE NO.	ITEM NO.
5310-00-045-3296	3	34	5940-00-577-3807	2	48
5310-00-045-3296	4	5	5940-00-577-3807	3	2
5310-00-045-4007	2	32	5940-00-577-3807	3	10
5310-00-045-4007	3	6	5940-00-577-3807	3	27
5310-00-045-4007	3	20	5940-00-577-3807	3	30
5310-00-045-4007	4	8	5940-00-577-3807	3	44
5905-00-052-6852	3	32	5940-00-577-3807	3	63
6125-00-061-6652	2	9	5940-00-577-3807	3	69
9905-00-061-7284	2	11	5940-00-577-3807	4	17
4140-00-061-8116	2	27	5940-00-577-3807	5	1
5999-00-061-8168	2	5	5977-00-628-5322	2	19
6125-00-083-5893	2	20	5310-00-636-1865	2	60
6125-00-083-5896	2	30	5970-00-636-2027	2	63
6125-00-083-8321	2	2 <sup>3</sup>	4140-00-659-9864	2	29
6110-00-165-1541	1	1	5940-00-665-5592	2	29
5310-00-167-0816	2	31	5940-00-725-0765	3	59
5310-00-167-0816	2	65	6110-00-757-7037	3	57
5310-00-167-0816	3	7	6110-00-757-7038	5	11
5310-00-167-0816	3	21	6105-00-764-8872	5	12
5310-00-167-0816	3	9	6125-00-818-9707	2	15
5310-00-167-0818	4	35	5305-00-887-6075	2	35
5310-00-167-0818	3	6	5305-00-889-2999	2	14
5310-00-167-0831	5	4	5305-00-889-3000	2	38
5305-00-175-3230	2	10	5977-00-895-3513	4	7
5310-00-184-8977	4	21	5977-00-895-3514	2	6
5310-00-194-0634	4	20	5940-00-926-0016	2	7
5310-00-261-8278	3	46	5940-00-926-9741	3	56
5310-00-264-1390	3	47	5940-00-926-9741	2	55
5310-00-274-8702	4	19	5940-00-926-9741	3	42
5310-00-274-8707	4	23	5940-00-926-9741	3	65
6125-00-310-3502	2	3	5940-00-926-9741	3	65
3110-00-346-2370	2	25	5940-00-926-9741	3	67
3110-00-346-2371	2	24	5940-00-926-9741	4	14
5310-00-410-3015	4	26	5910-00-933-0493	3	18
6125-00-421-0316	2	12	5310-00-934-9763	4	22
6125-00-444-1071	5	3	5977-00-937-9507	4	61
5305-00-470-8352	5	2	5940-00-954-1628	2	12
5940-00-477-8362	3	49	5305-00-958-5453	4	26
5940-00-477-8362	3	53	5305-00-984-4984	2	19
6125-00-486-8739	2	13	5305-00-984-4992	3	5
5310-00-515-8058	4	3	5305-00-984-6191	4	1
3110-00-516-5318	2	21	5305-00-989-7434	4	4
5365-00-527-8177	2	4	5305-00-989-7435	4	15
5310-00-543-2410	5	5	5305-00-990-6444	4	33
5310-00-576-0546	4	25	5305-00-990-6444	3	10
5940-00-577-3807	2	44	5305-00-993-0190	4	6
			5910-01-011-1132	2	51

PART NUMBER	FSCM	FIG. NO.	ITEM NO.	PART NUMBER	FSCM	FIG. NO.	ITEM NO.
AN507-632R4	88044	5	10	A10934	07639	3	36
AN960-10	88044	3	35	A15598	07639	3	13
AN960-10	88044	4	6	A15600	07639	3	14
AN960-4L	88044	5	4	A15607-1	07639	3	51
AN960-6	88044	2	31	A15607-2	07639	3	58
AN960-6	88044	2	65	A15607-3	07639	3	48
AN960-6	88044	3	7	A15610	07639	3	37
AN960-6	88044	3	21	A15821	07639	3	22
AN960-6	88044	4	9	A19788	07639	3	26
AN960-8	88044	4	3	A19789	07639	3	29
AN961-10	88044	3	47				
AN961-6	88044	4	20				
AN961-8	88044	4	24				
A10003	07639	7	2				
A10006	07639	2	8				
A10007	07639	2	19				
A10065	07639	2	62	A7663-2	07639	3	49
A10065	07639	2	68	A7663-2	07639	3	53
A10090-1	35662	2	16	A8784	07639	2	37
A102211	07639	2	5	85622-7	07639	3	32
A10258	07639	2	25	86034	07639	2	29
A10259	07639	2	24				
A10260	07639	2	23				
A10265	07639	2	21				
A10315	07639	2	63	CSV1185-5	07639	1	1
A10316	07639	2	60	C45316	96733	3	18

PART NUMBER	FSCM	FIG. NO.	ITEM NO.	PART NUMBER	FSCM	FIG. NO.	ITEM NO.
C4578	07639	2	30	P10327G049	81349	3	11
D719	07639	2	15	P10327J033	81349	4	16
D720	07639	2	13	P103270023	81349	3	28
F10402G071EAWG22WORANGE	81349	2	56	P10352P053	07639	2	47
G5876	07639	5	12	P10352P053E20AWGBLK	81349	2	42
G5877-5	07639	5	3	P10352P053E20AWGBLK	81349	2	43
G5878	07639	5	11	P10352S034	07639	2	49
G7132	07639	3	23	P10452R031E12AWGBLACK	81349	3	39
G7137	07639	3	24	P11273-2	07639	5	8
K20677	07639	2	69	P12845	07639	4	27
K20678	07639	2	54	P12846	07639	2	34
K24873-3	07639	5	2				
K29594-1	07639	2	40	GOW343TYPERBCLM12AWG	81349	3	17
K29594-2	07639	2	45	SA10128	07639	2	27
K29605	07639	3	62	SA10164	07639	2	51
K29606	07639	3	1	SA10214	07639	2	6
K29607	07639	3	9	SA10215	07639	2	7
K29608	07639	4	13	SA10323	07639	2	61
MILW16878TYPEE20AWGRED	07639	2	71	SA10347	07639	2	67
MS20341-10A	96906	3	45	SA10926	07639	3	15
MS21318-14	96906	2	10	SA10928-2	07639	3	25
MS25080-3	96906	3	56	SA10972	07639	3	41
MS25080-4	96906	3	57	SA10973	07639	3	66
MS25131-1	15972	3	55	SA15119	07639	4	12
MS25338-42	96906	4	2	SB6497	07639	3	56
MS26515-1	96906	2	11	SB6501	07639	2	9
MS35190-236	96906	2	26	SB6675	07639	2	35
MS35206-214	96906	5	6	SC4163	07639	2	20
MS35206-217	96906	2	38	SC4284	07639	2	12
MS35206-227	96906	3	19	V22C7	07639	4	11
MS35206-230	96906	4	7				
MS35206-232	96906	3	5				
MS35206-243	96906	4	1	YAE18N	09922	3	4
MS35207-261	96906	3	33	YAE18N	09922	2	55
MS35207-261	96906	4	10	YAE18N	09922	3	42
MS35207-263	96906	4	4	YAE18N	09922	3	65
MS35207-264	96906	4	15	YAE18N	09922	3	67
MS35338-100	96906	3	46	YAE18N	09922	4	14
MS35338-40	96906	5	5	YAE22G13	09922	2	44
MS35338-41	96906	2	32	YAE22G13	09922	2	48
MS35338-41	96906	3	6	YAE22G13	09922	3	2
MS35338-41	96906	3	20	YAE22G13	09922	3	10
MS35338-41	96906	4	8	YAE22G13	09922	3	27
MS35338-43	96906	3	34	YAE22G13	09922	3	30
MS35338-43	96906	4	5	YAE22G13	09922	3	44
MS35338-60	96906	4	19	YAE22G13	09922	3	63
MS35338-61	96906	4	23	YAE22G13	09922	3	69
MS35338-98	96906	4	21	YAE22G13	09922	4	17
MS35338-99	96906	4	25	YAE22G13	09922	5	1
MS35649-265	96906	4	22	1522-7	07639	2	14
MS35649-286T	96906	4	26	1562-26	07639	2	4
M655C2T	75560	2	41	33457	00779	3	16
M655C2T	75560	2	46				
M70F	14438	2	28	36272	00779	3	38
NPC2	81074	3	8	36272	00779	3	61
NPC3	81074	5	7	4012	77147	3	59
P10327G017	81349	3	3	5101-39MD	79136	2	22
P10327G037E22AWGBLACK	81349	3	68	5797-77DS	82415	4	18
P10327G039	81349	3	43	8TB8	73382	3	12
P10327G047E22AWGBLACK	81349	3	64	8009	43334	2	3

SECTION IV

NATIONAL STOCK NUMBER AND PART NUMBER INDEX

LATEST NATIONAL STOCK NUMBER ASSIGNMENTS

STOCK NUMBER	FIG. NO	ITEM NO	STOCK NUMBER	FIG NO	ITEM NO
5940-00-050-2308	2	53	5305-00-530-9225	2	16
3110-00-061-7300	2	2			
5910-00-062-0018	3	50	5360-00-763-0841	2	62
5910-00-062-0018	3	60	5360-00-763-0841	2	68
5305-00-088-9158	5	9	5940-00-813-0698	2	57
5365-00-282-5379	2	22	5940-00-813-0698	2	70
5940-00-501-7669	3	40	5305-00-984-4989	2	64
5940-00-502-4522	3	12			

LATEST PART NUMBER ASSIGNMENTS

PART NUMBER	FSCM	FIG NO	ITEM NO	PART NUMBER	FSCM	FIG NO	ITEM NO
AN515-6-7	88044	2	64	MS35206-237	96906	2	33
CP09A3KB104K3	81349	3	50	MS35431-3	96906	2	53
CP09A3KB104K3	81349	3	60	P10327M018	81349	3	31
MS20659-5	96906	3	40	YAE518N1	09922	2	57
MS24693S1	96906	5	9	YAE518N1	09922	2	70

ADDITIONAL LATEST NATIONAL STOCK NUMBER ASSIGNMENTS

STOCK NUMBER	FIG. NO.	ITEM NO.
5305-00-022-8212	2	50
5305-00-022-8292	2	1
5305-00-022-8292	2	17
5305-00-022-8292	2	58
5910-00-080-0753	2	39
5310-00-422-7138	2	18&59
5305-00-558-8735	2	66
5940-00-583-8908	3	55
5910-00-683-7161	2	36
5910-00-807-5566	2	52
5940-00-926-9741	3	4
5305-00-984-6224	2	33
5910-00-984-8900	3	5
5340-00-985-6633	3	8

ADDITIONAL LATEST PART NUMBER ASSIGNMENTS

PART NUMBER	FSCM	FIG. NO.	ITEM NO.
A2052	72121	2	18
A2052	72121	2	59
CP05A3KB104K3	81349	2	36
CP05A3KE103K3	81349	2	39
CP09A3KE333K3	81349	3	52
CP10A3KB104K3	81349	2	52
918503	76152	2	50
228503	00000	2	66
5R327-1	29092	2	1
5R327-1	29092	2	17
5R327-1	29092	2	58

RECOMMENDED CHANGES TO EQUIPMENT TECHNICAL MANUALS



# SOMETHING WRONG WITH THIS MANUAL?

THEN JOT DOWN THE  
INFORMATION ABOUT IT ON THIS  
FORM TEAR IT OUT, FOLD  
IT AND DROP IT IN THE  
MAIL!

FROM (YOUR UNIT'S COMPLETE ADDRESS)

DATE

PUBLICATION NUMBER

TM 11-6125-253-24P

DATE

19 July 78

TITLE

BE EXACT PIN-POINT WHERE IT IS

IN THIS SPACE TELL WHAT IS WRONG  
AND WHAT SHOULD BE DONE ABOUT IT

PAGE  
NO

PARA  
GRAPH

FIGURE  
NO

TABLE  
NO

TEAR ALONG DOTTED LINE

TYPED NAME GRADE OR TITLE AND TELEPHONE NUMBER

SIGN HERE

DA FORM 2028-2  
1 AUG 74

P S --IF YOUR OUTFIT WANTS TO KNOW ABOUT YOUR MANUAL "FIND," MAKE  
A CARBON COPY OF THIS AND GIVE IT TO YOUR HEADQUARTERS

FILL IN YOUR  
UNIT'S ADDRESS

FOLD BACK

DEPARTMENT OF THE ARMY

OFFICIAL BUSINESS  
PENALTY FOR PRIVATE USE, \$300

POSTAGE AND FEES PAID  
DEPARTMENT OF THE ARMY  
DOD-314



Commander  
US Army Communications and  
Electronics Materiel Readiness Command  
ATTN: DRSEL-MA-Q  
Fort Monmouth, New Jersey 07703

TEAR ALONG DOTTED LINE

FOLD BACK





FILL IN YOUR  
UNIT'S ADDRESS

FOLD BACK

DEPARTMENT OF THE ARMY

OFFICIAL BUSINESS  
PENALTY FOR PRIVATE USE \$300

POSTAGE AND FEES PAID  
DEPARTMENT OF THE ARMY  
DOD-314



Commander  
US Army Communications and  
Electronics Materiel Readiness Command  
ATTN: DRSEL-MA-Q  
Fort Monmouth, New Jersey 07703

TEAR ALONG DOTTED LINE

FOLD BACK

RECOMMENDED CHANGES TO EQUIPMENT TECHNICAL MANUALS



# SOMETHING WRONG WITH THIS MANUAL?

THEN, JOT DOWN THE DUPE ABOUT IT ON THIS FORM, TEAR IT OUT, FOLD IT AND DROP IT IN THE MAIL!

FROM: (YOUR UNIT'S COMPLETE ADDRESS)

Commander  
Stateside Army Depot  
ATTN: AMSTA-US  
Stateside, N.J. 07703

DATE 10 July 1975

PUBLICATION NUMBER TM 11-5840-340-12	DATE 20 Jan 74	TITLE Radar Set AN/SPS-76
-----------------------------------------	-------------------	------------------------------

BE EXACT... PIN-POINT WHERE IT IS				IN THIS SPACE TELL WHAT IS WRONG AND WHAT SHOULD BE DONE ABOUT IT:
PAGE NO	PARA-GRAPH	FIGURE NO	TABLE NO	
2-25	2-28			<p>Recommend that the installation antenna alignment procedure be changed throughout to specify a 2° IFF antenna lag rather than 1°.</p> <p>REASON: Experience has shown that with only a 1° lag, the antenna servo system is too sensitive to wind gusting in excess of 27 knots, and has a tendency to rapidly accelerate and decelerate as it hunts, causing strain to the drive train. Hunting is minimized by adjusting the lag to 2° without degradation of operation.</p>
3-10	3-3		3-1	<p>Item 5, Function column. Change "2 db" to "3db."</p> <p>REASON: The adjustment procedure for the TRANS POWER FAULT indicator calls for a 3 db (500 watts) adjustment to light the TRANS POWER FAULT indicator.</p>
5-6	5-8			<p>Add new step f.1 to read, "Replace cover plate removed in step e.1, above."</p> <p>REASON: To replace the cover plate.</p>
		FO3		<p>Zone C 3. On J1-2, change "+24 VDC to "+5 VDC."</p> <p>REASON: This is the output line of the 5 VDC power supply. + 24 VDC is the input voltage</p>

TEAR ALONG DOTTED LINE

TYPED NAME, GRADE OR TITLE AND TELEPHONE NUMBER SSG I. M. DeSpirito 999-1776	SIGN HERE <i>SSG I. M. DeSpirito</i>
---------------------------------------------------------------------------------	-----------------------------------------

FILL IN YOUR  
UNIT'S ADDRESS

FOLD BACK

DEPARTMENT OF THE ARMY

\_\_\_\_\_  
\_\_\_\_\_

OFFICIAL BUSINESS

PENALTY FOR PRIVATE USE \$300

POSTAGE AND FEES PAID  
DEPARTMENT OF THE ARMY  
DCD-314



Commander  
US Army Communications and  
Electronic Materiel Readiness Command  
ATTN: DRSEL-MA-Q  
Fort Monmouth, New Jersey 07703

TEAR ALONG DOTTED LINE

FOLD BACK

By Order of the Secretary of the Army.

Official

BERNARD W ROGERS  
General, United States Army  
Chief of Staff

J C PENNINGTON  
Brigadier General, United States Army  
The Adjutant General

DISTRIBUTION

To be distributed in accordance with DA Form 12 36, Section I, organizational avionics literature requirements for  
PUB-733/ A

**END**

7-25-83

**DATE**



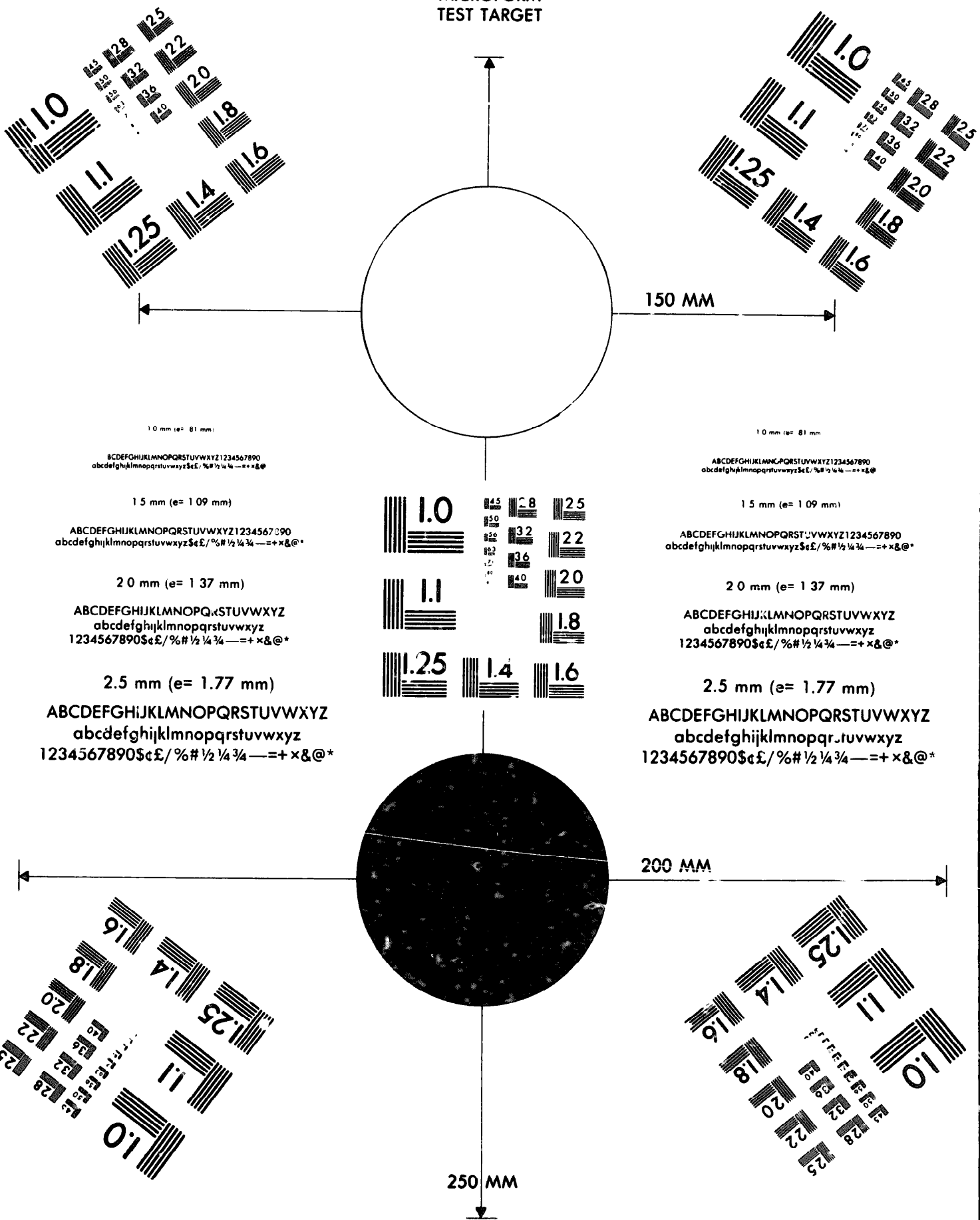






DEPARTMENT OF THE ARMY

MICROFORM TEST TARGET



1.0 mm (e= 81 mm)

BCDEFGHIJKLMNOPQRSTUVWXYZ1234567890  
abcdefghijklmnopqrstuvwxyz\$%&/'%# 1/2 1/4 3/4 — = + x & @ \*

1.5 mm (e= 109 mm)

BCDEFGHIJKLMNOPQRSTUVWXYZ1234567890  
abcdefghijklmnopqrstuvwxyz\$%&/'%# 1/2 1/4 3/4 — = + x & @ \*

2.0 mm (e= 137 mm)

BCDEFGHIJKLMNOPQRSTUVWXYZ  
abcdefghijklmnopqrstuvwxyz  
1234567890\$%&/'%# 1/2 1/4 3/4 — = + x & @ \*

2.5 mm (e= 177 mm)

BCDEFGHIJKLMNOPQRSTUVWXYZ  
abcdefghijklmnopqrstuvwxyz  
1234567890\$%&/'%# 1/2 1/4 3/4 — = + x & @ \*

1.0 mm (e= 81 mm)

BCDEFGHIJKLMNOPQRSTUVWXYZ1234567890  
abcdefghijklmnopqrstuvwxyz\$%&/'%# 1/2 1/4 3/4 — = + x & @ \*

1.5 mm (e= 109 mm)

BCDEFGHIJKLMNOPQRSTUVWXYZ1234567890  
abcdefghijklmnopqrstuvwxyz\$%&/'%# 1/2 1/4 3/4 — = + x & @ \*

2.0 mm (e= 137 mm)

BCDEFGHIJKLMNOPQRSTUVWXYZ  
abcdefghijklmnopqrstuvwxyz  
1234567890\$%&/'%# 1/2 1/4 3/4 — = + x & @ \*

2.5 mm (e= 177 mm)

BCDEFGHIJKLMNOPQRSTUVWXYZ  
abcdefghijklmnopqrstuvwxyz  
1234567890\$%&/'%# 1/2 1/4 3/4 — = + x & @ \*

200 MM

250 MM

DEPARTMENT OF THE ARMY

MICROFORM TEST TARGET

